



the calf rearing solution





a digestive system in harmony

By following the principles of nature, the risk of nutritional scours, cross-suckling and poor weight performance that is often experienced with calf rearing can be significantly reduced.

In a lactating cow **Milk Let-Down** occurs when stimulation releases oxytocin into the blood stream. Oxytocin causes cells in the udder to contract and eject milk from the alveolus into the cisterns above the teats.

Oxytocin does NOT cause milk to flow from the teat. The teat canal must be physically opened to remove milk.

When a calf suckles from a cow she applies both positive and negative pressure (squeezing and sucking). Squeezing stimulates the cow teat which causes the oxytocin to be released. The suckling overcomes the sphincter barrier, allowing the calf to remove milk from the teat. The calf drinks **slowly**, up to **4 or 5 minutes per litre of milk** and produces a lot of **saliva**.



Saliva plays a vital part in calf health and is produced by suckling slowly. It is loaded with natural antimicrobial properties to boost immunity and it balances the pH in the abomasum so the milk can correctly curd.

Saliva also contains essential enzymes like lipase for fat digestion.

The **slow** delivery of milk into the abomasum allows rennin and other enzymes time to curd the milk. It is vital that lactose is primarily digested in the abomasum and not passed through to the intestines. **E.Coli** numbers multiply rapidly when in contact with raw milk or lactose. This is a leading cause of nutritional scours in young calves.

The natural suckling action of using positive and negative pressure activates the **oesophageal groove** to close and form a tube so milk bypasses the rumen and enters the abomasum.

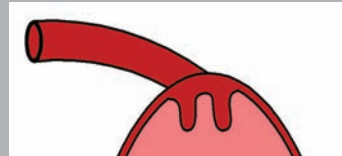
The oesophageal groove is a curved muscle that lies at the base of the oesophagus. It ensures that everything that enters the calf's mouth, ends up in the right place.

The Rumen. When a calf drinks water from a trough or eats meal and grains, the oesophageal groove stays relaxed to direct these foods to the rumen for digestion.

The Abomasum. When a calf suckles on a cow's teat the oesophageal groove closes and forms a tube to direct the milk to the abomasum for digestion. This tube is small and may not cope with the large volumes of milk caused by fast feeding.

This demonstrates the Oesophageal Groove when relaxed.

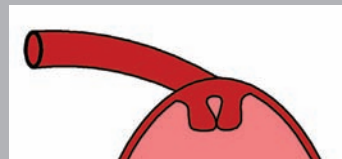
When a calf is drinking water from a trough or eating grain or pasture based products the oesophageal groove muscles are relaxed and the water or food drops into the rumen.



This demonstrates the Oesophageal Groove when a calf suckles from a teat.

The muscles tighten to form a tube to direct milk to the abomasum.

Fast feeding can overflow the tube so milk can enter the rumen.



The oesophageal groove is small, so it is essential that the milk delivery speed is controlled so it does not overflow and enter the rumen or lungs.

If milk overflows the oesophageal groove and enters the rumen it causes digestive problems. The rumen has enzymes to digest grains and forage. These enzymes have no ability to digest milk which ferments, producing lactic acid as a by-product.

The lactic acid enters the bloodstream of the calf and causes depression, anorexia and occasionally death.



Extract

It is vital to the health of the calf that all the milk goes into the abomasum. If milk enters the rumen through fast feeding, tube feeding or bucket feeding, it can cause gut ache, as the enzymes in the rumen cannot digest milk. Milk in the rumen is a key contributor to rumen acidosis and ill thrift.

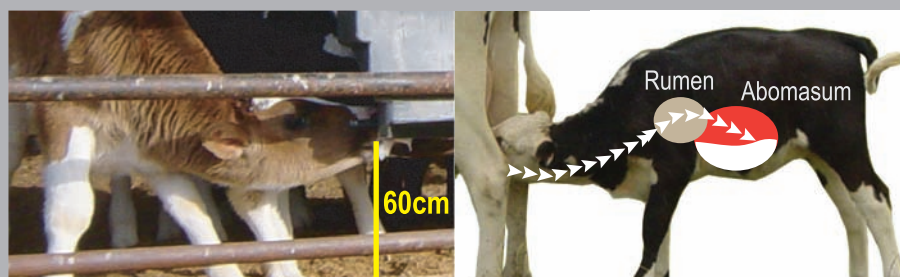
Source - Dr. Jim Quigley

Optimise **performance**

For the digestive system to perform the calf should drink in the same position as when feeding from a cow.

The milk flow should be controlled as she suckles for the oesophageal groove to fully function so milk bypasses the rumen.

It is important that the height of the teat is approximately 60cm from the ground for the oesophageal groove to fully function so the milk is directed to the abomasum.



By understanding the physiology of the calf and the roles of the digestive system we can clearly see that the slow feeding a calf experiences when feeding from a cow is vital to the calf's digestive health.

problems with fast feeding

When a teat squirts milk into the calf's mouth it seems like it makes life easier for the calf. However we know that the digestive system cannot cope with a fast flow of milk, and problems can arise.

Calves will tell us when they are drinking too quickly and there are some key signs to look for:

Cross-suckling. Cross-suckling is when calves suckle on each other or their surroundings after feeding.

Calves cross-suckle when they have been fed milk too quickly.

Cross-suckling can cause infections, especially in the navel but most importantly cross-suckling damages developing udder tissue and the teat canal and is strongly linked to mastitis in first lactation heifers.

Cross-suckling is also strongly linked to blind quarters in heifers.



Coughing while drinking. When milk is squirting into the calf's mouth the oesophageal groove can overflow and milk can enter the trachea causing the calf to step back and cough. This can cause respiratory problems and is a strong indicator that the flow of milk is too fast.

Peer Reviewed & Published Research

Six groups of calves were taken from the same farm. They were fed the same rations and raised in the same facility.

Three groups were fed with Milk Bar Teats, while the other three groups were fed on a teat with a faster flow of milk that delivers milk at a similar speed to teats that are commercially available in New Zealand.

Calves were weighed and the speed of drinking and behaviour was recorded.

This research has been peer reviewed and published in the Journal of Applied Animal Nutrition.

Calves fed with **Milk Bar Teats did not cross-suckle!**

During the research trial it was noted that calves fed on the faster flow teat were hyperactive immediately after feeding and "were more likely to engage in non-nutritive sucking of each others body parts" (cross-suckling).

Results from the Milk Bar Teat:



Calves fed with Milk Bar Teats were settled and relaxed after feeding.

All calves had healthy, undamaged teats.

The keratin plug remains intact to protect the teat canal from infection.

Results from the teat with a faster flow of milk:



These calves cross-suckled vigorously after feeding.

Cross-suckling damage and loss of the keratin plug was common.

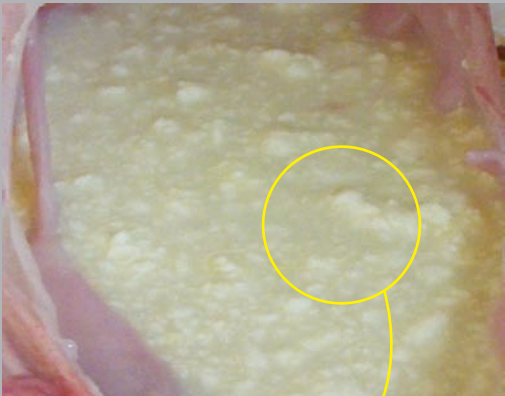
Extract

'Calves suckling on each other can affect the development of the juvenile udder. This in conjunction with the transmission of mastitis pathogens is prone to lead to heifer mastitis' Source - Schalm

Calves fed with **Milk Bar Teats** have **increased lactose absorption!**

During the trial samples were taken from the abomasum, ileum, intestines and colon of 14 day old calves, two hours after feeding and the lactose levels recorded.

Results from the Milk Bar Teat:

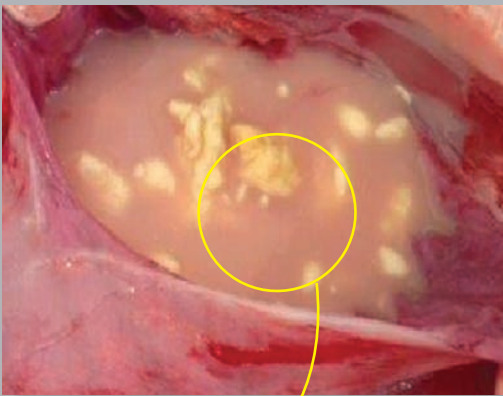


Healthy thick, even curding.
Only **3mg/gm** of lactose remained two hours after feeding.
Reducing lactose (sugar) in the intestines limits the food source required for pathogens to multiply.
NOTE: Lactose absorption can not be observed!
It requires laboratory analysis.

Nutritional scours

Nutritional scours is typically caused by excess sugar (lactose) entering the intestines and feeding the pathogens that live there. Pathogens feed on sugar and they multiply rapidly. The good news is that nutritional scours can often be prevented by controlling the flow of milk into the calf. This allows the digestive system time to do it's job and reduce the amount of sugar entering the intestines.

Results from the teat with a faster flow of milk:



Insufficient curding.
Significantly higher lactose (**12mg/gm**) in the abomasum of calves fed from a faster teat.
These calves had much higher concentrations of lactose in the intestine and faeces.
Higher lactose levels in the intestine feed pathogens, allowing them to multiply rapidly. This can be a major cause of scours.

Extract

'The initial digestion of milk occurs in the abomasum (or fourth stomach). Scours can usually be traced back to a failure of adequate milk digestion in the abomasum.

Nutritional scours is simply the end result of an oversupply of lactose in the intestines, caused by milk moving too rapidly out of the abomasum, so it cannot be broken down quickly enough.

Nutritional scours often progresses to infectious scours. Pathogens use excess lactose as a nutrient source to increase in numbers. Source- Victoria Department of Primary Industries.

Weight Trials

There have been many trials documented which show significantly improved weight gains with calves fed from Milk Bar Teats. These trials have been done under controlled conditions so we think they are relevant.
Healthier digestion results in heavier calves!

Country	Year	Breed	Days	Milk Bar Teat (kg/day)	Faster Teat (kg/day)	ADG increase with Milk Bar	Weight Gain kg
New Zealand	2014	Friesian	42	0.736	0.665	10.68%	2.98
Italy	2017	Buffalo	85	0.691	0.62	11.45%	6.03
Brazil	2015	Cross Bred	60	0.724	0.616	17.53%	6.48

Find the published research findings here: <https://www.cambridge.org/core/journals/journal-of-applied-animal-nutrition/article/div-classtitleinfluence-of-teat-flow-rate-in-commercial-milk-feeding-systems-on-calf-digestion-and-performancediv/E97A63D76CE57FAA82EB4CEA97083221>

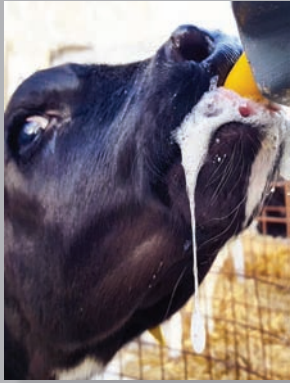


Yes, we are obsessed with saliva!
It's because we know how
much it benefits calf health!

the teat is the key

Milk Bar Teats are designed with calf health in mind. The rubber is specifically formulated to ensure calves suckle and nurse through to weaning to support the digestive system. Milk Bar Teats are made in Waipu, Northland and each and every one is hand slit so we know the milk delivery is the correct speed.

Milk Bar is world renowned for innovation but in the case of the Milk Bar Teat we copied the cow and emulated the milk let-down process!



Squeeze a Milk Bar Teat and milk drips out.

The calf squeezes the teat to open it and suckles to release the milk.

This uses **positive and negative pressure just like Mother Nature.**

She drinks slowly at about **3 to 4 minutes per litre** and produces a lot of saliva.

This works in harmony with nature and promotes calf health.

Squeeze a fast flowing teat and milk squirts out.

When the calf feeds she squeezes the teat and milk is forced into her mouth.

NO SUCKLING IS REQUIRED, ONLY SQUEEZING AND GULPING.

She drinks very quickly **often less than 1 minute per litre** and produces little saliva.

This is totally opposite to nature and causes digestive problems.



Milk Bar® Teats



Milk Bar Colostrum Teat

Milk Bar Code 900300

Quantity: 5 per pack

Milk Bar Colostrum Teat has been specifically formulated to make training calves easy whilst still ensuring that the saliva is produced for immunity.

To make the training process faster, fit one of your pen feeders with

Milk Bar Colostrum Teats and use this feeder for training. After a couple of days calves will be confidently feeding and will be ready to move on to the Milk Bar Teat for continued health benefits.



Milk Bar Teat


Milk Bar Code 900100

Quantity: 10 per pack

Proven to enhance calf health!

The pull through design stops teats rotating and loosening during feeding and is extremely hygienic. The inverted tip prevents irritations to the roof of the calves mouth.

To maximise results put new Milk Bar Teats into your feeders at the beginning of the season. This ensures that calves nurse and suckle at the correct speed right through to weaning.



Feeders interstack with teats fitted. Sounds simple but it's unique to Milk Bar and makes handling feeders quick and easy.

Ezi Lock Hooks are 100% bunt proof and they will lock onto anything up to 75mm.

Feeders come with either large cut outs like this Milk Bar 10, or secure finger grips or both.

Feeders come with teats and hooks fitted and ready to use!

user friendly feeders

Milk Bar feeders are made from the highest quality UV stabilised polyethylene.

The teat channel is low to reduce milk wastage and there are no threads or valves to trap bacteria.

Not every calf shed is the same so Milk Bar Feeders have different hook systems depending on feeder size and weight.

Ezi Lock Hooks

100% bunt proof.

Feeders hang upside down to drain.

Adjustable to fit gates or rails up to 75mm rails.



Moulded

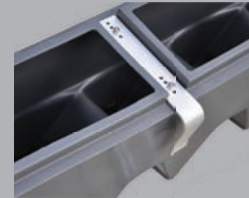
Moulded into the feeder to fit 25, 45 or 50mm rails.



Aluminium

Used on feeders where hooks are too far apart to be adjusted simultaneously

Pre-drilled for use on different rail or gate widths.



Milk Bar® Portable Feeders

Milk Bar Trainer Bottle

Calf Teat - Milk Bar Code 901100

Volume: 3L

Weight: 600gms

Length: 350mm

Height: 150mm

Width: 120mm

Handle: Carry handle



Milk Bar 1

Milk Bar Code 910100

Volume: 3L

Weight: 700gms

Length: 210mm

Height: 210mm

Width: 210mm

Hooks: Moulded 25mm

Handle: Finger grips



Milk Bar 5

Milk Bar Code 910200

Volume: 15L

Weight: 2kg

Length: 300mm

Height: 360mm

Width: 300mm

Hooks: Moulded 25-40mm

Handle: Carry handle



Milk Bar 6

Milk Bar Code 910300

Volume: 36L

Weight: 3kg

Length: 700mm

Height: 400mm

Width: 300mm

Hooks: Ezi Lock

Handle: Finger grips



Milk Bar 10

Milk Bar Code 910400

Volume: 60L

Weight: 5kg

Length: 850mm

Height: 430mm

Width: 460mm

Hooks: Ezi Lock

Handle: Cut out handles



Eco 10

Milk Bar Code 927100

Volume: 60L

Weight: 5kg

Length: 850mm

Height: 430mm

Width: 460mm

Hooks: Moulded 40mm

Handle: Cut out handles



Milk Bar 12

Milk Bar Code 910500

Volume: 90L

Weight: 8kg

Length: 1.2m

Height: 460mm

Width: 430mm

Hooks: Aluminium

Handle: Finger grips and cut out handle



TIP! Make sure the teats are around 60cm or knee height from the bedding. This helps the oesophageal groove to close.

Patent Application PCT/NZ2016/050190 International patent applications and designs apply.
Patents apply to feeders NZ Pat518590



Milk Bar® Compartment Feeders

Milk Bar 2 Compartment

Milk Bar Code 912100

Volume: 2.5L ea

Weight: 2kg

Length: 400mm

Height: 400mm

Width: 250mm

Hooks: Ezi Lock

Handle: Finger grips



Milk Bar 3 Compartment

Milk Bar Code 912200

Volume: 2.5L ea

Weight: 3kg

Length: 500mm

Height: 400mm

Width: 250mm

Hooks: Ezi Lock

Handle: Finger grips



Milk Bar 4 Compartment

Milk Bar Code 912250

Volume: 2.5L ea

Weight: 3.5kg

Length: 660mm

Height: 400mm

Width: 300mm

Hooks: Ezi Lock

Handle: Finger grips



Milk Bar 5 Compartment

Milk Bar Code 912300

Volume: 2.5L ea

Weight: 4.5kg

Length: 850mm

Height: 390mm

Width: 300mm

Hooks: Ezi Lock

Handle: Finger grips



Milk Bar 10 Compartment

Milk Bar Code 912400

Volume: 2.5L ea

Weight: 11kg

Length: 1.13m

Height: 430mm

Width: 480mm

Hooks: Aluminium

Handle: Finger grips and cut out handle



Milk Bar Feeders interstack with teats fitted!



Patent Application PCT/NZ2016/050190
International patent applications and designs apply.
Patents apply to feeders NZ Pat518590



Handles give support and make these larger feeders easier to move.

Milk Bar® Straight Feeders

These straight feeders are designed to be used on a gate along the front of the calf pen.

Milk Bar 13

Milk Bar Code 910600

Volume: 100L

Weight: 10kg

Length: 2.12m

Height: 330mm

Width: 200mm

Hooks: Aluminium

Handle: Two large moulded handles



Milk Bar 18

Milk Bar Code 910700

Volume: 170L

Weight: 16kg

Length: 3.6m

Height: 350mm

Width: 250mm

Hooks: Aluminium

Handle: Five large moulded handles



Milk Bar 15 Compartment

Milk Bar Code 912500

Volume: 2.5L ea

Weight: 16kg

Length: 3.3m

Height: 350mm

Width: 210mm

Hooks: Aluminium

Handle: Five large moulded handles



Milk Bar® Free Standing

The Milk Bar 20 can be used inside or out. Fantastic for larger groups of calves.

Milk Bar 20

Milk Bar Code 910800

Volume: 120L

Weight: 12kg


Diameter: 900mm

Height: 900mm



Solid base stops calves pushing the feeder over.

Feeder bowl stacks inside the base for storage and transport.



All Milk Bar Waterers are easy to connect to your water supply.

The unique Pen Waterer keeps water clean and fresh!

Milk Bar Waterers have a drain point for easy cleaning.

essential meal & water

Water is beneficial for the development of the rumen and is essential for digestion and the metabolic function of the calf. Even slight dehydration will affect the metabolic function and reduce feed intake.

Milk Bar® Waterers

Calves are curious so all Milk Bar Waterers are fitted with a fully protected float valve to prevent calves from flooding pens. All Milk Bar Waterers have a small volume. This is so water is frequently refilling for freshness.

Snack Water Trough

Milk Bar Code 935300

Volume: 15L

Weight: 2.5kg

Length: 650mm

Height: 130mm

Width: 200mm

Hooks: Moulded 25mm

Valve: McInnes Float Valve

- Use between adjoining pens
- Drain point



Milk Bar Pen Waterer

Milk Bar Code 935100

Volume: 8L

Weight: 3.5kg

Length: 330mm

Height: 575mm

Width: 275mm

Hooks: Screws to wall

Valve: McInnes Float Valve

- Stops dust, bird and calf faeces from contaminating the water!
- Drain point. 20mm threaded inlet.



Milk Bar Tri Pen Waterer

Milk Bar Code 935500

Volume: 20kg

Weight: 7kg

Length: 910mm

Height: 610mm

Width: 300mm

Hooks: Screws to wall

Valve: McInnes Float Valve

- Ideal for one large pen or between two smaller pens



McInnes Float Valve

Milk Bar Code 935402

Weight: 600gms

Length: 220mm

Height: 110mm

Width: 100mm

PSI: Up to 100psi

- 20mm male thread inlet.
- The protected tongue stops calves flooding pens



Milk Bar® Meal Feeders

Growth rates are accelerated when calves have access to meal and water from day one.

The enzymes in grains stimulate and develop the rumen. From the age of six weeks calves can start to use some energy and nutrition from grain. Provided they are eating 700 grams of meal at six weeks you can start to reduce the milk volume.

Braden Start Bottle

Milk Bar Code 930100

Volume: 500gms

Weight: 2kg

Length: 200mm

Height: 300mm

Width: 200mm

Hooks: Plastic strap

- Keeps grain fresh and dry
- Increases consumption



Snack Bar

Milk Bar Code 930800

Volume: 8kg

Weight: 2kg

Length: 650mm

Height: 130mm

Width: 200mm

Hooks: Moulded 25mm



Munch Trough

Milk Bar Code 930700

Volume: 20kg

Weight: 4kg

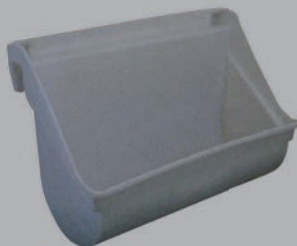
Length: 800mm

Height: 530mm

Width: 300mm

Hooks: Moulded 50mm

- High back and sides prevent spillage



Milk Bar Bird Proof

Milk Bar Code 930900

Volume: 40kg

Weight: 12kg

Length: 1m

Height: 850mm

Width: 300mm

Hooks: Aluminium

- Cover with filling hatch keeps contents dry
- Curtain keeps birds out
- Feeds 30 calves ad lib inside or out



lamb & kid feeders

Lambs and kids are especially fragile so the care of their digestive system is important. Milk Bar Lamb and Kid Teats help lambs and kids to feed at a healthy speed and produce the right amount of saliva for natural immune protection.

Milk Bar Lamb/ Kid Colostrum Teat

Milk Bar Code 900400

Quantity: 5 per pack

The perfect training teat.

Change to the Milk Bar Lamb Teat after Day 3 or 4.



Milk Bar Lamb/ Kid Teat

Milk Bar Code 900200

Quantity: 5 per pack

Controlled milk flow for good health.

Inverted tip prevents mouth irritations.



Milk Bar® Lamb & Kid Feeders

Milk Bar Lamb and Kid Feeders have no tubes and are easy to clean and use. To reduce costs, it is best to choose a feeder with extra teats available. Kids are far less likely to bite teats if there are more teats on the feeder than there are kids in the group.

Milk Bar Lamb/ Kid Bottle

Milk Bar Code 928100

Volume: 3L

Weight: 600gms

Length: 350mm

Height: 150mm

Width: 120mm

Handle: Carry handle



Milk Bar Lamb/ Kid 1

Milk Bar Code 928200

Volume: 3L

Weight: 700gms

Length: 210mm

Height: 210mm

Width: 210mm

Hooks: Moulded 25mm

Handle: Finger grips



Milk Bar Lamb/ Kid 3

Milk Bar Code 928300

Volume: 3L

Weight: 700gms

Length: 210mm

Height: 210mm

Width: 210mm

Hooks: Moulded 25mm

Handle: Finger grips



Milk Bar Lamb/ Kid 7

Milk Bar Code 928400

Volume: 15L

Weight: 2kg

Length: 300mm

Height: 360mm

Width: 300mm

Hooks: Moulded 25-40mm

Handle: Carry handle



Milk Bar Lamb/ Kid 10

Milk Bar Code 928500

Volume: 36L

Weight: 3kg

Length: 700mm

Height: 400mm

Width: 300mm

Hooks: Ezi Lock

Handle: Finger grips



Milk Bar Lamb/ Kid 20

Milk Bar Code 928525

Volume: 100L

Weight: 10kg

Length: 2.12m

Height: 330mm

Width: 200mm

Hooks: Aluminium

Handle: Finger grips



Milk Bar Lamb/ Kid 5 Compartment

Milk Bar Code 928600

Volume: 300ml ea

Weight: 2kg

Length: 680mm

Height: 180mm

Width: 170mm

Hooks: Ezi Lock

Handle: Finger grips



Also available in
10 compartments!

Milk Bar Lamb/ Kid 30

Milk Bar Code 928900

Volume: 120L

Weight: 12kg

Diameter: 900mm

Height: 600mm



kid & goat solutions

Milk Bar 3 Teat Separator

Milk Bar Code 929500

The Milk Bar Teat Separator allows you to use Milk Bar Teats on Automatic Feeders so lambs and kids produce maximum saliva for improved immunity and health!

Use Milk Bar Colostrum Teats for the training stage and then switch to Milk Bar Teats for the growth stage.

The teat height is easily adjusted to ensure the correct suckling action is achieved for all ages.

The separator stops lambs and kids from biting the ends of the teats off. This drastically reduces the number of annual teat replacements to reduce costs and prevents milk losses for improved profitability.

The Milk Bar Separator is extremely easy to clean saving valuable time.

Simple to install



Board with exposed teats



Separators slide into place



The Board is ready for use



Teats are now protected from chewing

Patent Number FR14/61328

Milk Bar Lick Station

Milk Bar Code 929002

Weight: 3kg

Length: 330mm

Height: 575mm

Width: 275mm

Hooks: Screws to wall

- Holds a standard lick block, rock salt, or a loose salt / mineral mix.
- Sloping top prevents animals from climbing on it.



Milk Bar Uni Trough

Milk Bar Code 929000

Volume: 3.5L

Weight: 4kg

Length: 330mm

Height: 575mm

Width: 275mm

Hooks: Screws to wall

Valve: McInnes Float Valve

- Stops dust, bird and kid faeces from contaminating the water!
- Drain point. 20mm threaded inlet.
- Ideal for horned or dehorned goats.
- Sloping top stops animals from climbing on it.



Milk Bar Tri Trough

Milk Bar Code 929001

Volume: 20kg

Weight: 7kg

Length: 910mm

Height: 610mm

Width: 300mm

Hooks: Screws to wall

Valve: McInnes Float Valve

- Ideal for horned or dehorned goats.
- Sloping top stops animals from climbing on it.



Farmer observation:

"The water is much cleaner than the water in the open trough.

There is no sign of any bird faeces in the water.

The goats prefer drinking from the Tri Trough and I have not seen any using the open trough since we installed the Tri Trough."

easy to Clean

Milk Bar Feeders and Teats are designed to be as to easy as clean as possible. The pull through design of the teats reduces tight areas where bacteria can grow. Teats do not need to be removed or flushed through for cleaning.



Daily: Rinse feeders with cold water.



At least twice a week: Scrub feeders with hot water (50°C) and Milk Bar Detergent (**Alkali**). Bend the teats with your brush to flush the milk out of the teat. Rinse with clean water.



Mobiles: The design of Milk Bar Classic and Deluxe Range means there is no need for pipes so feeders are really very simple to clean!

1. Wind the leveller down and open the drain taps. Give it a rinse.
2. Level the mobile. Put hot water and Milk Bar Detergent in the tank.
3. Lightly scrub the tank and manifolds.
4. With hot water in the manifolds, clean the teats with a horizontal scrubbing action. This bends the teats, forcing water back to clean the inside of the teat.



Milk Bar® Calving Accessories

Milk Bar Plug 22

Milk Bar Code 900109

Quantity: 10 per pack
Easily and effectively blocks off any spare teat holes in your feeders.



Milk Bar Teat Tool

Milk Bar Code 950400

Makes changing teats simple!
Simply place the Teat Tool around the teat and pull it out.



Milk Bar Rail Pail

Milk Bar Code Green 950100 Yellow 950101 Magenta 950102

Volume: 25L

Designed specifically for calf rearers.
Fill feeders **through** rails and stop lifting heavy buckets **over** rails.



Milk Bar Detergent

Milk Bar Code 950300

Volume: 2L

Strips milk fat and protein from teats and feeders.
Use at least twice a week.



Mount Ease

Milk Bar Code Black 950000 Blue 950005 Magenta 950004

Perfect for jobs around the shed, getting on a horse or a trampoline!
Non-skid tread and cut out handle.



Milk Bar® Parts

Ezi Lock Hook Set

Milk Bar Code 950200

Replacement hook set.
100% bunt proof.

Braden Start Bottle Nipple

Milk Bar Code 930200

Replacement Nipple for the Braden Start Bottle.

Aluminium Hooks Short

Milk Bar Code 116002

Feeder Model: Milk Bar 12

Aluminium Hooks Medium

Milk Bar Code 116003

Feeder Model: Bird Proof Meal Bar

Aluminium Hooks Long

Milk Bar Code 116004

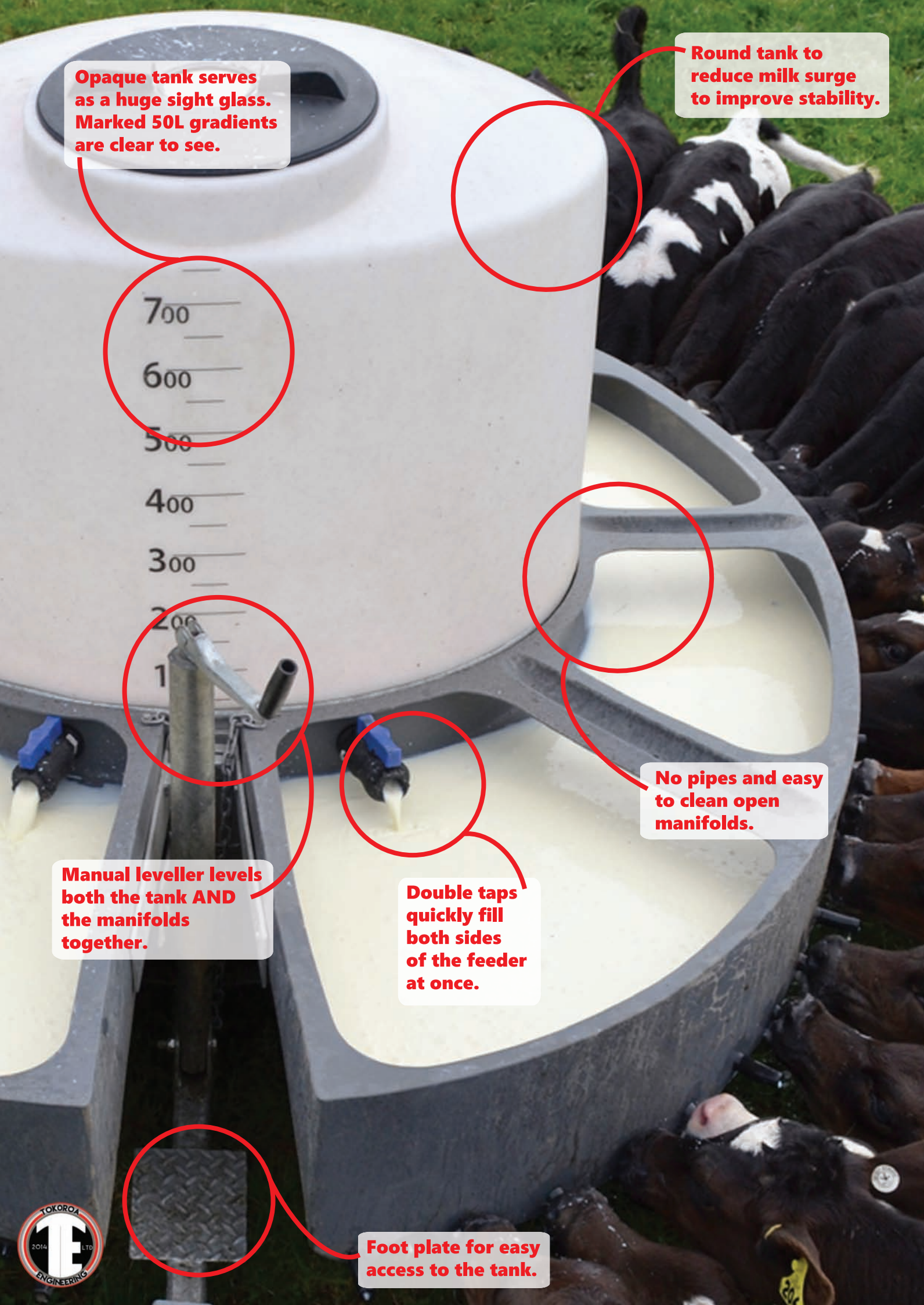
Feeder Model: Milk Bar 13, Milk Bar 18, Milk Bar 15 & 10 Compartment, Lamb 20.

Bird Proof Curtain

Milk Bar Code 930910

Replacement curtain for the Milk Bar Bird Proof Meal Bar.
The curtain is simple to replace, simply screw into place.





Opaque tank serves as a huge sight glass. Marked 50L gradients are clear to see.

Round tank to reduce milk surge to improve stability.

700

600

500

400

300

200

100

No pipes and easy to clean open manifolds.

Manual leveller levels both the tank AND the manifolds together.

Double taps quickly fill both sides of the feeder at once.

Foot plate for easy access to the tank.

Milk Bar® Mobiles

The Milk Bar range of mobile calf feeders are unique as the tank and manifolds are joined without pipes and level together. This is why the Milk Bar mobiles have the lowest center of gravity in the market with better stability. With NO pipes or tubes to clog and trap bacteria, and a tank that completely drains, you couldn't ask for a more hygienic mobile feeder.

Classic Range

The Milk Bar Classic Range is perfect for farms where calf paddocks are fairly close to the shed. The Classic Range has a single axle and is a really lovely simple feeder to handle and use.

MB40SC

Teats: 40
Space: 140mm
Volume: 500L
Axle: Single
Length: 2.2m
Width: 1.75m
Drawbar: 1.55m
Weight: 145kg

MB50SC

Teats: 50
Space: 110mm
Volume: 500L
Axle: Single
Length: 2.2m
Width: 1.75m
Drawbar: 1.55m
Weight: 145kg

MB60SC

Teats: 60
Space: 110mm
Volume: 500L
Axle: Single
Length: 2.2m
Width: 1.75m
Drawbar: 1.55m
Weight: 145kg



Deluxe Range

Deluxe Mobiles have one set of Large Gauge Springs so the feeder stays level as it follows the tow vehicle and does not move the rear of the vehicle over uneven terrain. This action minimises punctures as the wheels climb over the top of sharp objects.

The centre bush of the walking beam is an oily bush which is self lubricating and ultra durable.

In addition Milk Bar Deluxe Mobiles have sideways levelling, a drawbar handle, jockey wheel and an increased wheel base of 1.35m

MB40SD

Teats: 40
Space: 140mm
Volume: 500L
Axle: Single
Length: 2.2m
Width: 1.75m
Drawbar: 1.55m
Weight: 145kg

MB40TD

Teats: 40
Space: 140mm
Volume: 500L
Axle: Tandem
Length: 2.2m
Width: 1.75m
Drawbar: 1.55m
Weight: 184kg

MB40T750D

Teats: 40
Space: 140mm
Volume: 750L
Axle: Tandem
Length: 2.2m
Width: 1.75m
Drawbar: 1.55m
Weight: 184kg



MB50SD

Teats: 50
Space: 110mm
Volume: 500L
Axle: Single
Length: 2.2m
Width: 1.75m
Drawbar: 1.55m
Weight: 145kg

MB50TD

Teats: 50
Space: 110mm
Volume: 500L
Axle: Tandem
Length: 2.2m
Width: 1.75m
Drawbar: 1.55m
Weight: 184kg

MB50T750D

Teats: 50
Space: 110mm
Volume: 750L
Axle: Tandem
Length: 2.2m
Width: 1.75m
Drawbar: 1.55m
Weight: 184kg

MB60SD

Teats: 60
Space: 110mm
Volume: 500L
Axle: Single
Length: 2.8m
Width: 2m
Drawbar: 1.25m
Weight: 157kg

MB60TD

Teats: 60
Space: 110mm
Volume: 500L
Axle: Tandem
Length: 2.8m
Width: 2m
Drawbar: 1.25m
Weight: 196kg

MB60T750D

Teats: 60
Space: 110mm
Volume: 750L
Axle: Tandem
Length: 2.8m
Width: 2m
Drawbar: 1.25m
Weight: 196kg



Patent Application PCT/NZ2016/050190 International patent applications and designs apply.
Patents apply to feeders NZ Pat NZ Pat 534401 NZ Pat 584477.

**Ring Tokoroa Engineering
for Milk Bar Mobiles!**

0508 333 337



Super Deluxe Range

When you have a lot of calves to feed, the Milk Bar Super Deluxe Range is the answer. Feeding large numbers of calves requires extra functionality such as a limitless steering axle and extra long drawbar to keep tractor wheels away from the manifolds when turning.

- Suspension.
- Sideways levelling.
- Moulded pump casing.
- 50mm taps and plumbing.
- Twin tanks holding 550L ea with marked gradients.
- 75 x 50mm box section steel chassis with suspension and tandem axles at rear for strength.
- Manual leveller levels the manifolds when feeding on uneven ground and lowers one end for complete drainage and cleaning.



MB80

Teats:	80	
Volume:	1100L	Manifold Volume: 400L
Front Axle Track:	1.18m	Rear Axle Track: 1.58m
Length:	5.5m	Width: 1.8m
Height:	1.2m	Drawbar: 2m

MB100

Teats:	100	
Volume:	1100L	Manifold Volume: 500L
Front Axle Track:	1.18m	Rear Axle Track: 1.58m
Length:	7.1m	Width: 1.8m
Height:	1.2m	Drawbar: 2m

Patent Application PCT/NZ2016/050190 International patent applications and designs apply. Patents apply to feeders NZ Pat NZ Pat 534401 NZ Pat 584477.

Mobile Parts

Mobile Tanks

Available in: 500L and 750L
Marked gradients
1.2m diameter
Taps not supplied

Milk Bar Leveller

Replacement leveller for all models

Rear Drawbar

Available in: Milk Bar 50 models
Milk Bar 60 models

Mobile Manifolds

Available in: 25 Teats
30 Teats

Milk Kart 550L

The Milk Kart 550L is ideal for delivery milk to large numbers of calves!

- 45cm diameter opening
- Galvanized trailer
- Drain tap for cleaning
- 550L tank with marked gradients
- Large carry tray

Available in three options

Milk Kart 550 Classic: Gravity outlet only.

Milk Kart 550 Deluxe: Complete with a 12 Volt Submersible pump.

MBMIX550 Milk Kart Mixer: Complete with 2" poly electric start petrol pump.



Meal Saver

The meal solution for paddocks!

- Eliminates meal wastage by being totally weather and pest proof
- Does not blow over in the wind and keeps meal dry and edible
- Counterbalanced lids that calves easily lift with their noses

Volume: 150kg
Length: 1.2m
Height: 730mm
Width: 800mm

NZ Pat # 585960



**Ring Tokoroa Engineering
for these great products!**

0508 333 337



make life easier with Milk Bar

Speed up the feeding process and reduce lifting and carrying! The fully insulated Milk Kart keeps milk warm and reduces time. The Milk Bar Milk Kart has exceptional manoeuvrability and automatically stops as soon as you release the handle.

Gentle 12V pump protects the milk.
Using a fast pump to pump or mix milk can damage the fat particles in the milk.
The pump is run by a battery which is securely housed with a charging system.

Large tap and nozzle with 2.5m of hose.

Moulded in sight glass with gradients.

Double wall construction lined with insulation to keep milk warm during feeding.

Drainage tap

When you release the handle it immediately stops the wheels.

Large diameter wheels are heavy duty with steel rims for excellent stability.

Milk Bar Milk Kart Deluxe

Milk Bar Code 925200

Volume: 125L

Length: 1m

Height: 1175mm

Width: 700mm

Hose: 2.5m

Battery: 12V

Charger: Yes

NOTE: Flow meter not supplied, however they are easy to fit.

Milk Bar Milk Kart Classic

Milk Bar Code 925100

Volume: 125L

Length: 1m

Height: 1175mm

Width: 700mm

Hose: No

Battery: No

Charger: No

Optional Power Whisk

Milk Bar Code 961100

A stainless steel whisk is driven by a 10.8 volt battery drill which thoroughly but gently mixes a full load of powder in no time!



Milk Bar Pump

The 12 volt submersible pump fits to Milk Bar Mobiles or Milk Bar Milk Karts.

12V Battery with box and charger

2.5m hose as standard

Optional 10m hose

25mm ball valve and nozzle

Flow Rate: 40 - 50 L/min depending on the hose length.

MILK BAR
easy for you, healthy for them



0800 104 119 www.milkbar.co.nz